

位微控制器 调试器

用户手册

Rev1.01 2024 01

声 明

“XHSC”

/

XHSC

XHSC

XHSC

XHSC

XHSC

“®” “™”

XHSC

XHSC

小华半导体有限公司 保留所有权利

目 录

适用对象

声 明

目 录

简介

1.1	5
1.2	5
1.3	6
1.3.1	6
1.3.2	7
1.4	8

功能介绍

2.1	CMSIS-DAP	14
2.1.1	14	
2.1.2	14	
2.2	18	
2.3	ISP	20

调试器固件升级

3.1	22
3.2	23
3.2.1	23
3.2.2	23
3.2.3	24

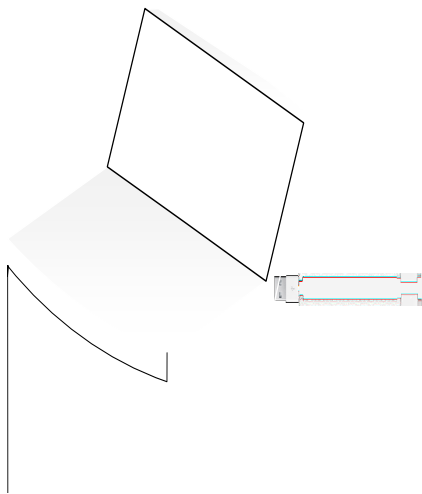
版本修订记录

简介

XH-LINK Cortex-M MCU Cortex-
M MCU MCU

概览

XH-LINK 1-1 XH-LINK Communication Device Class,
CDC XH-LINK USB PC PC IDE IAR MDK GCC
XH-LINK XH-LINK SWD



4)

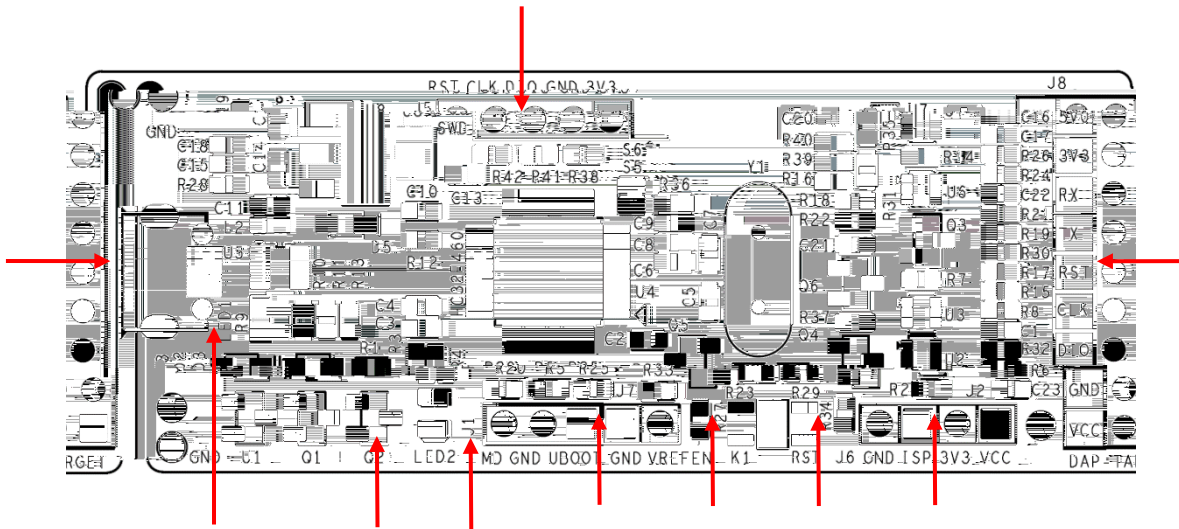
U

5)

6) LED

板载硬件与接口

板载硬件说明



1	Micro-USB	2	USB VBUS
3	XH-LINK	4	XH-LINK
5	Level shifter	6	XH-LINK
7	ISP	8	Target 3V3
9	Target /	10	XH-LINK

XH-LINK

MCU

XH-LINK

DAP

LED

1) XH-LINK

VBUS

LED1

LED2

2) USB

VBUS

3) XH-LINK

- 1) XH-LINK J8 5V0 3V3
- 2) XH-LINK 5PIN SWD J8 VCC GND CLK DIO RST
- Target J2 XH-LINK 3.3V XH-LINK
- USB VBUS 5V VCC
- 5V0

接口说明

XH-LINK J8 1-1

表 接口说明

编程仿真接口 引脚标号	功能	备注
5V0	5.0V	5.0V MCU
3V3	3.3V	3.3V MCU
RX	UART	MCU UART
TX	UART	MCU UART
RST	MCU	MCU
CLK	SWD	MCU SWD
DIO	SWD	SWD /
GND		MCU

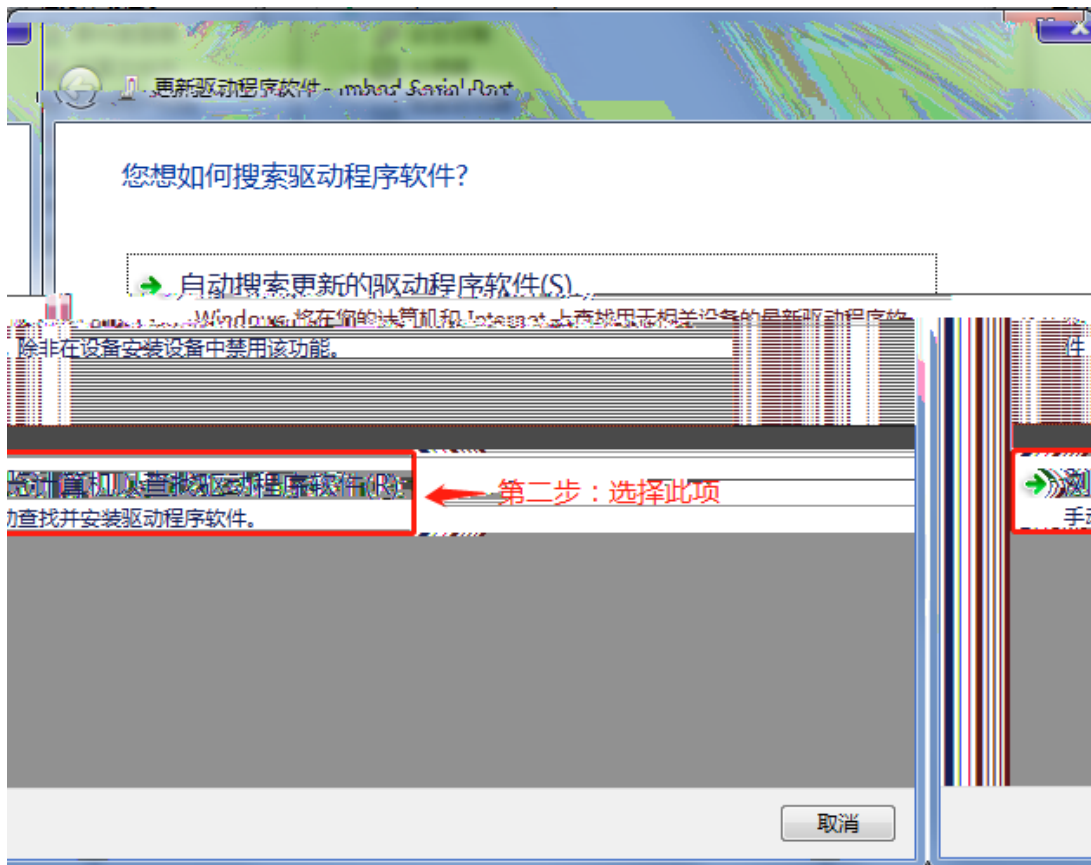
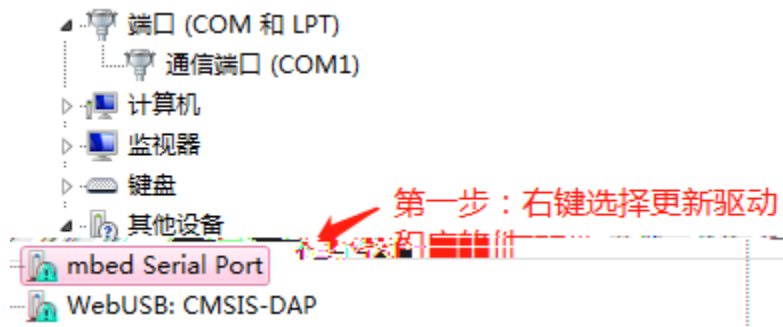
串口驱动安装

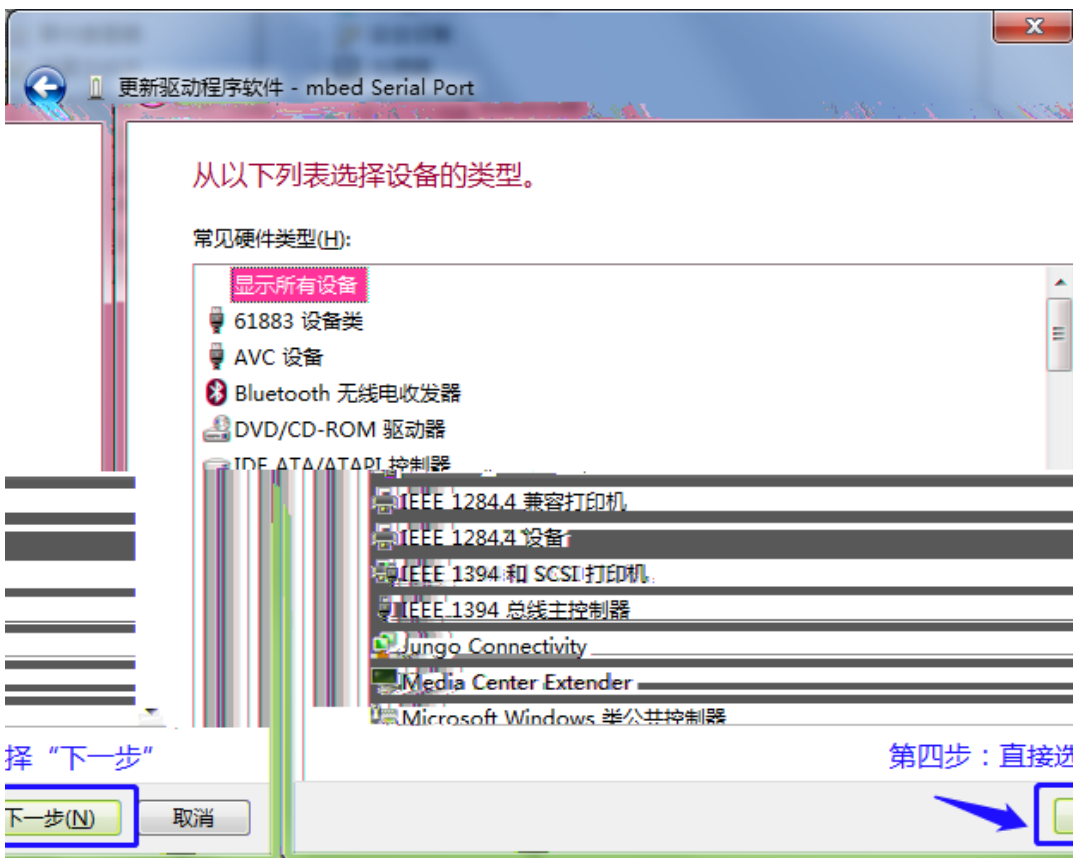
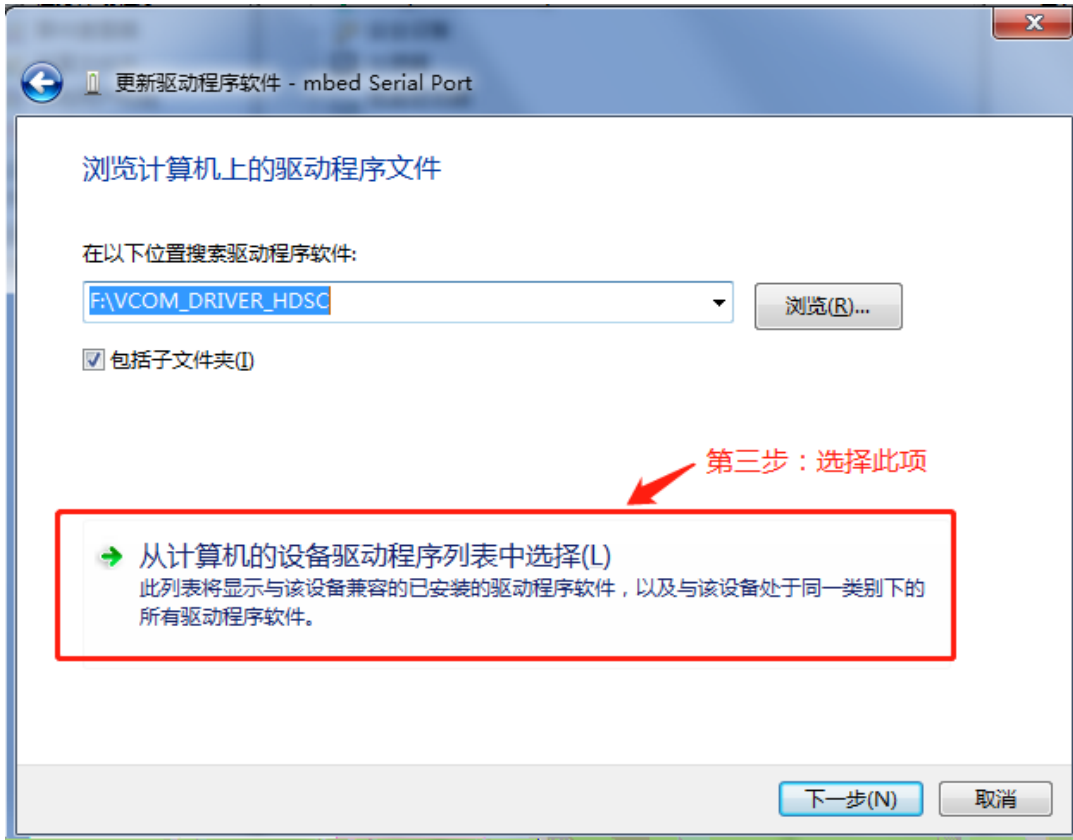
XH-LINK

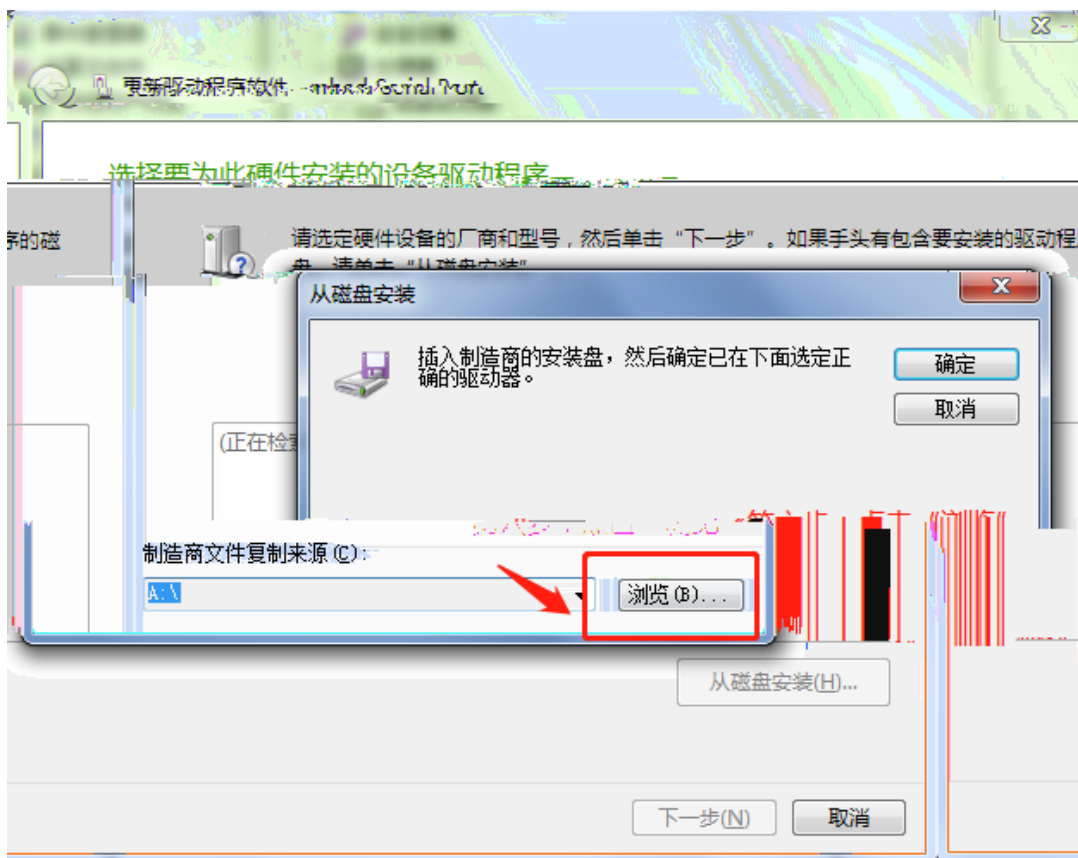
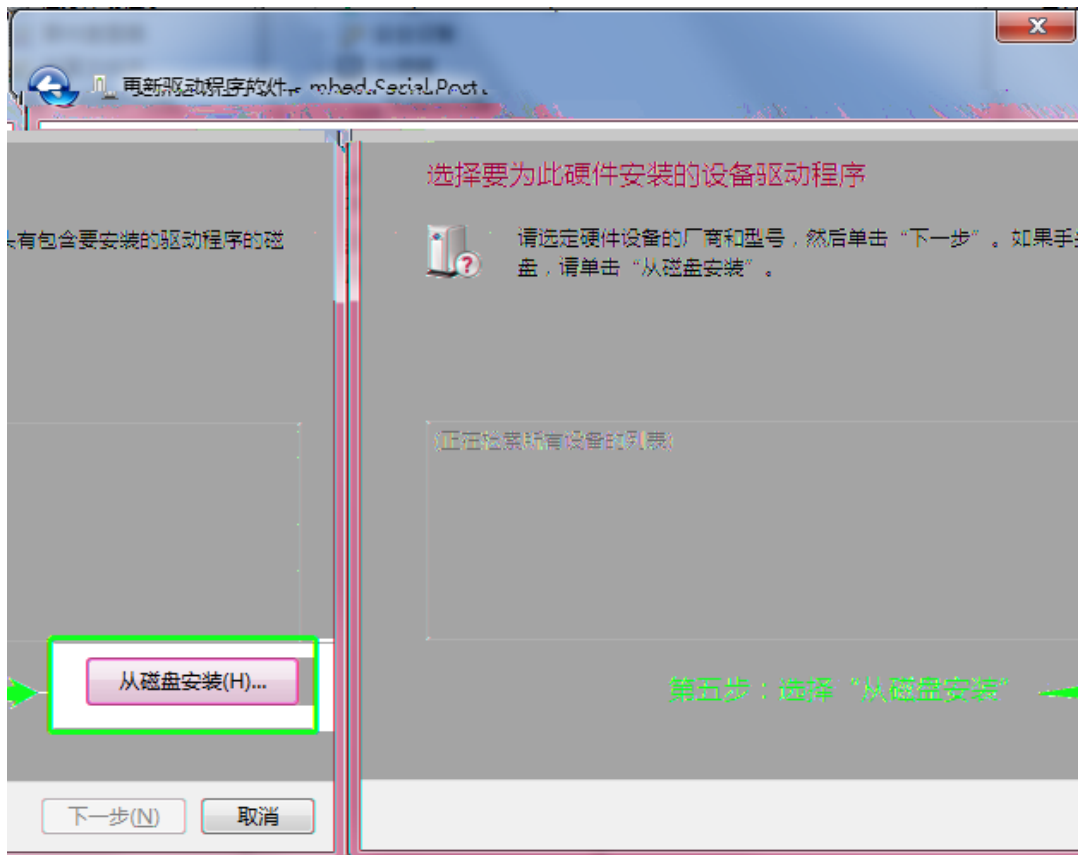
Win7

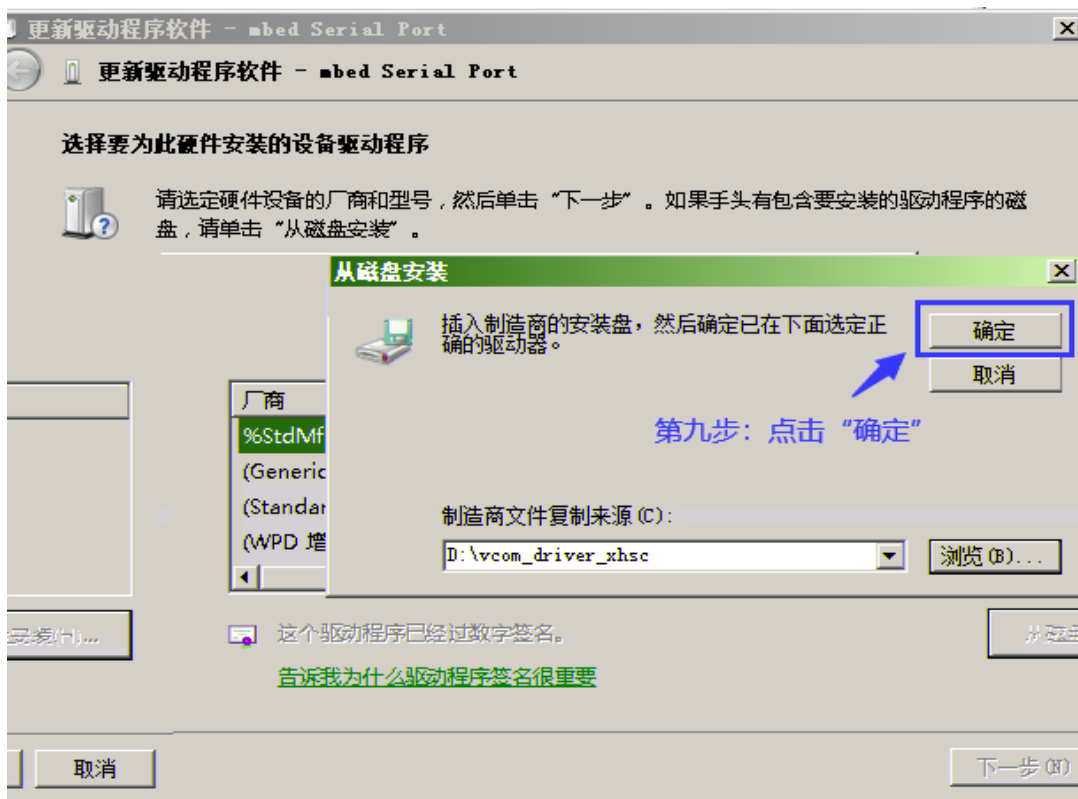
Win10

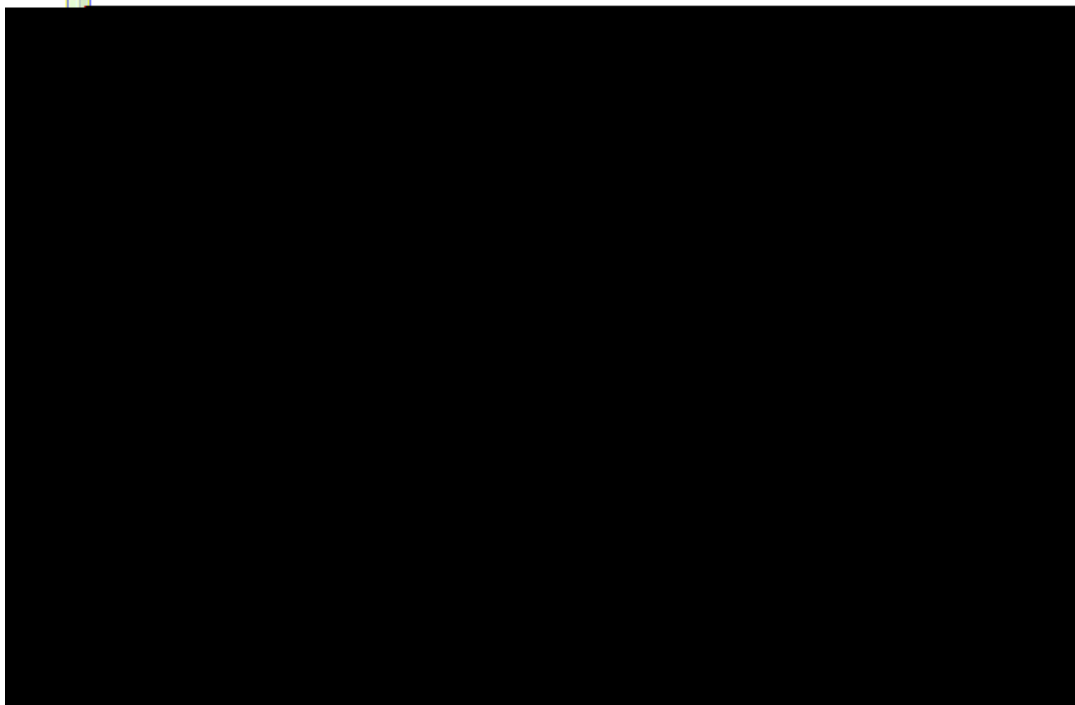
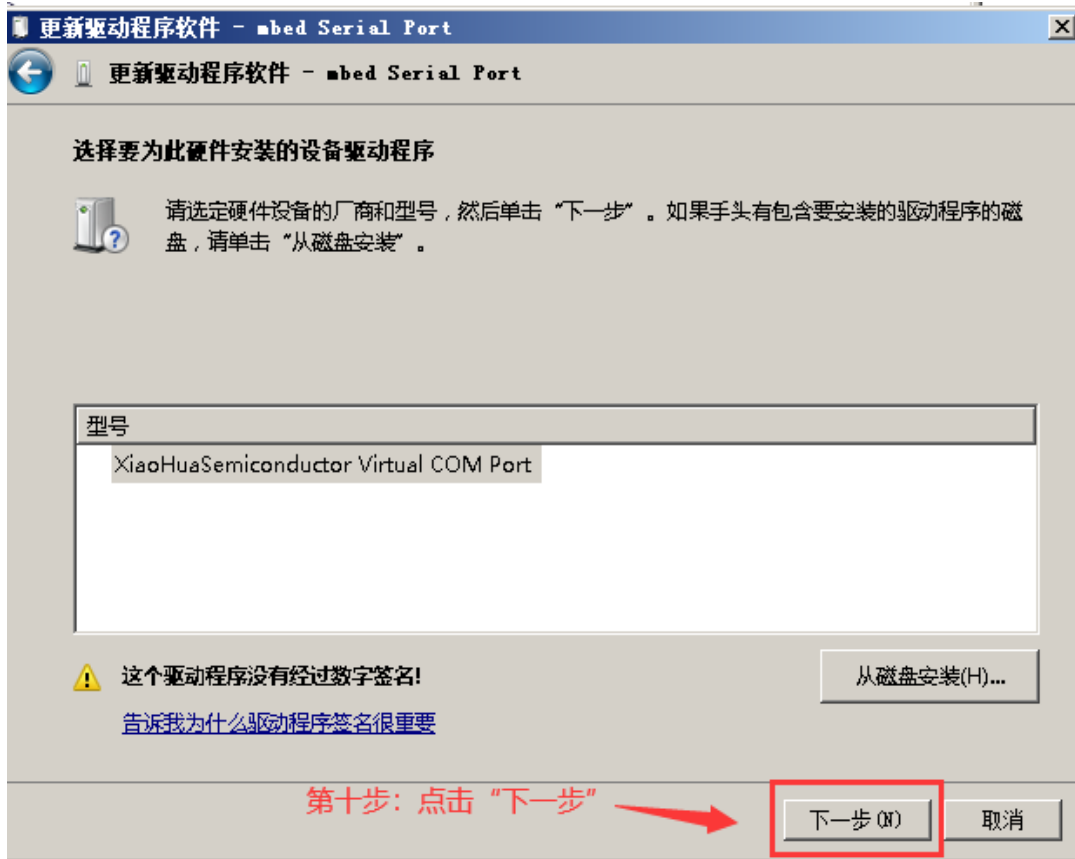
vcom_driver_xhsc













功能介绍

调试

接口连接

SWD

2-1

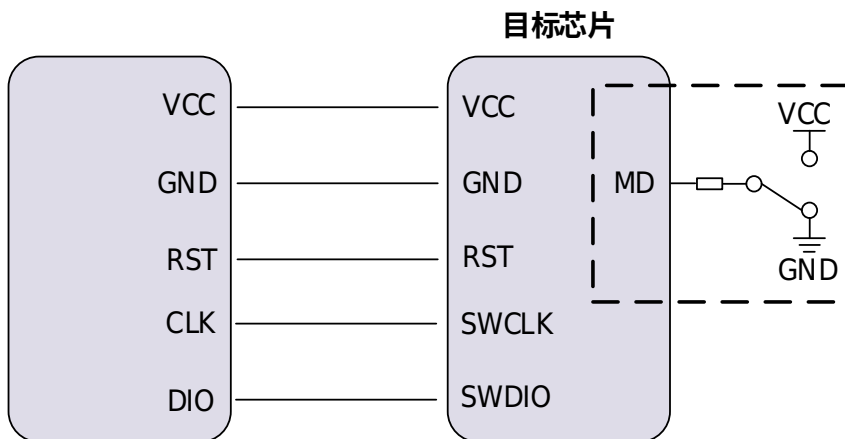


图 调试连接图

应用样例

XH-LINK

IAR Embedded Workbench

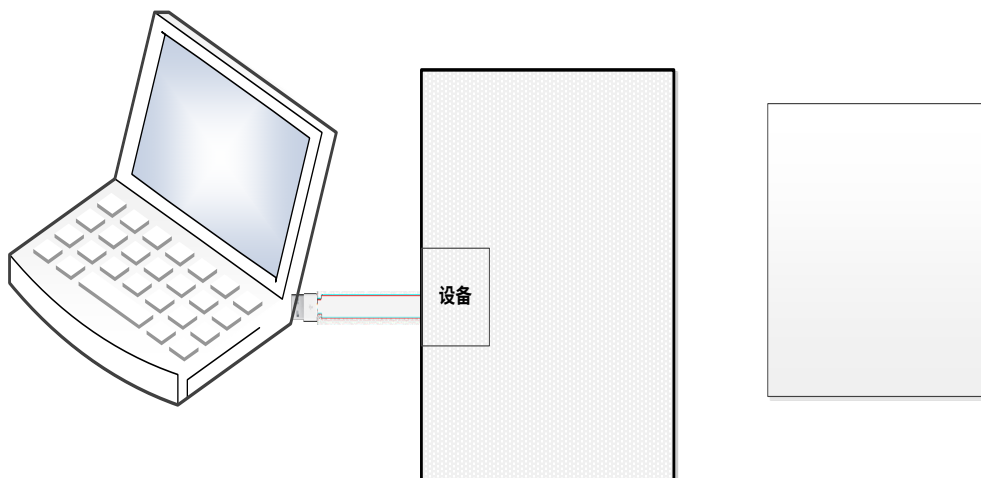
1. MCU HC32F460PETB EV_F460_LQ100_Rev2.0

2-2

XH-LINK

J2 3V3 VCC

XH-LINK



2-3

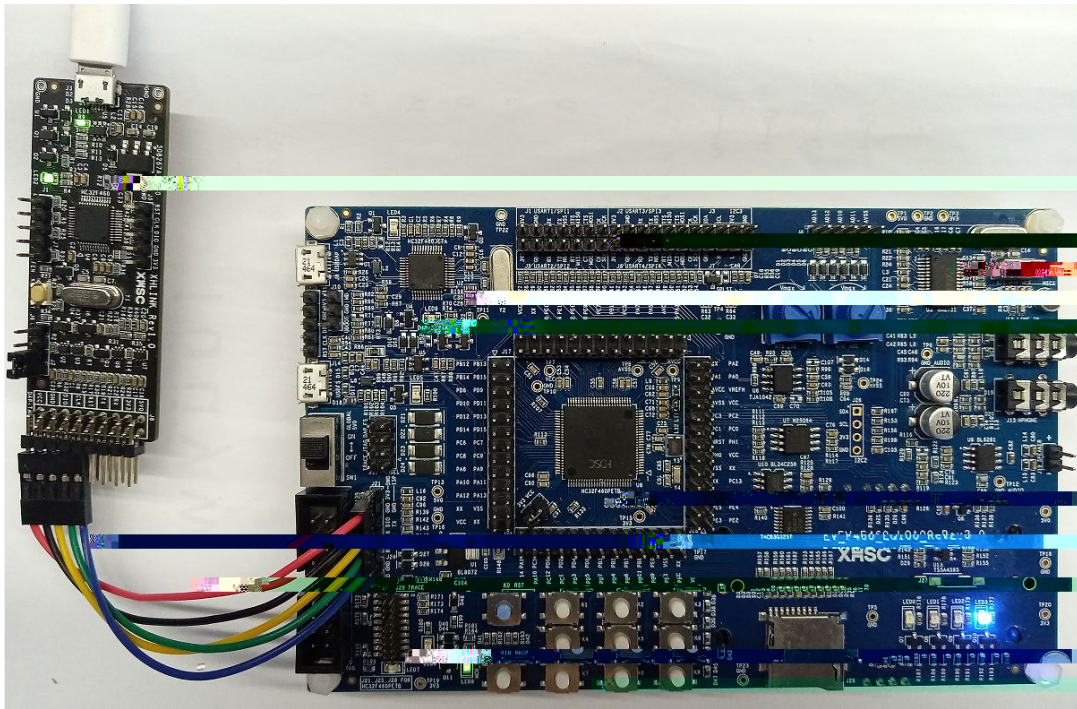
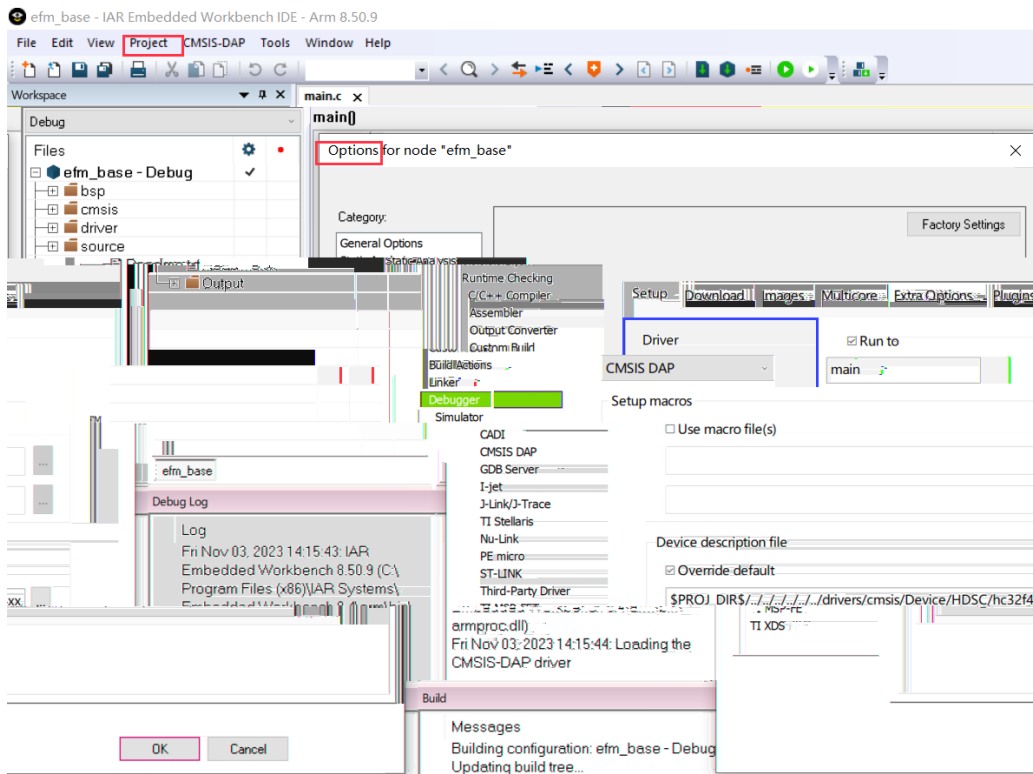
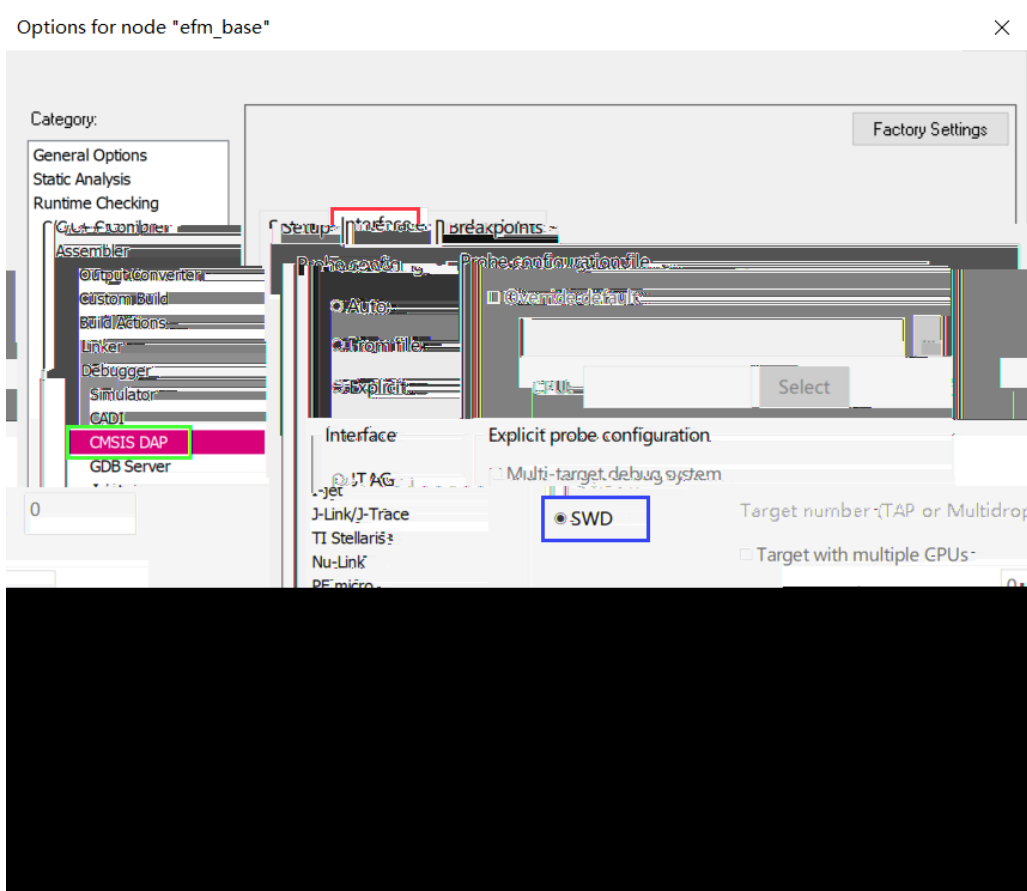


图 实物连接图

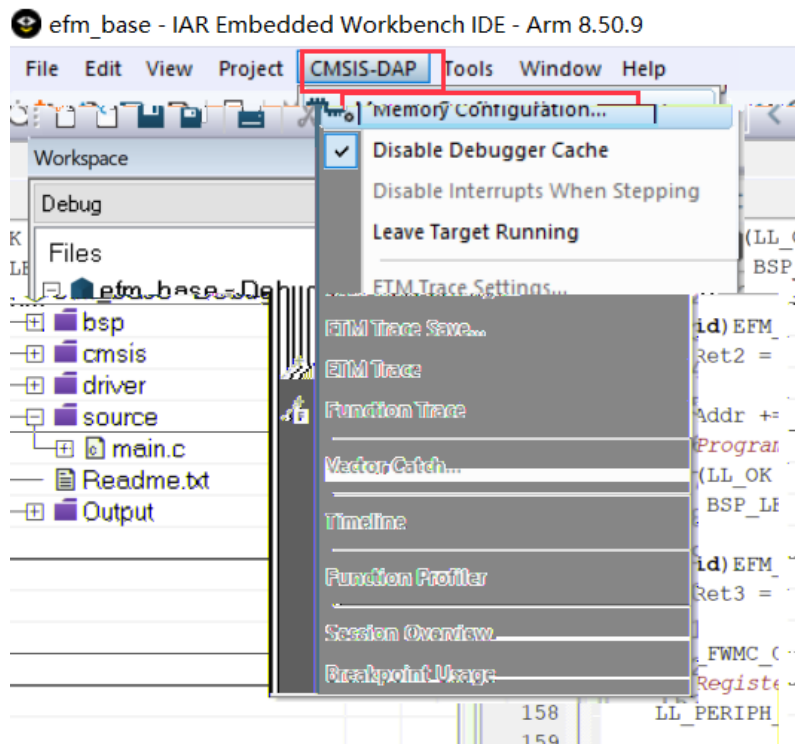
2. IDE IAR IAR Embedded Workbench IDE “Project” -> “Options” -> “Debugger” -> “Setup” “Driver” CMSIS DAP



3. "CMSIS DAP" -> "Interface" Interface SWD



4. "CMSIS DAP"->"Memory Configuration..." MCU "Memory Configuratoin..."



5. "Download and debug"

串口通信

XH-LINK	RX TX	USART	TX RX	MCU HC32F460PETB
EV_F460_LQ100_Rev2.0	adc_base			USART4 AD

2-4 XH-LINK

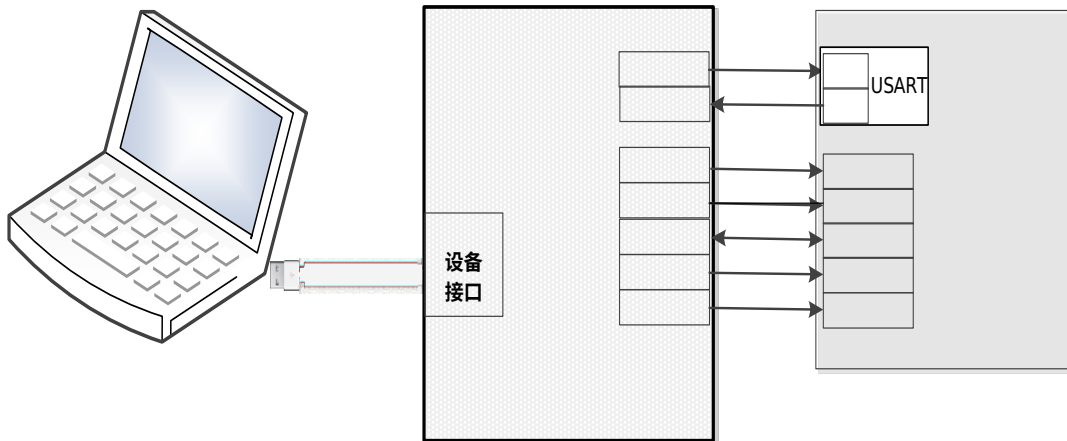


图 串口通信连接图

2-5

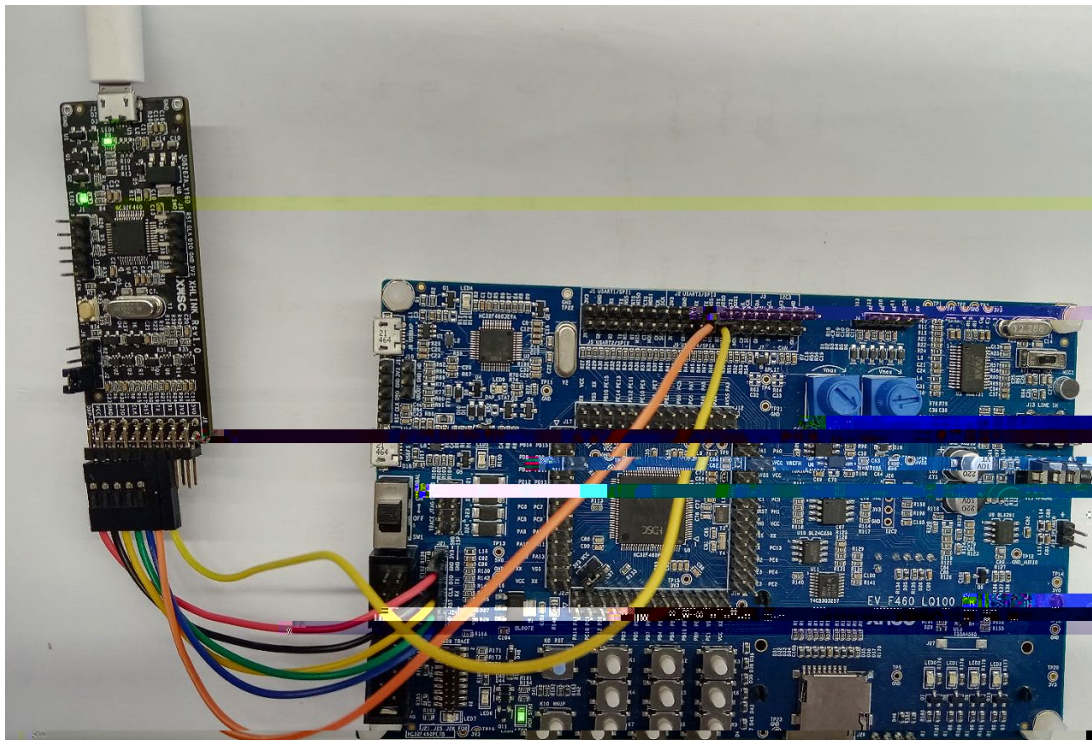
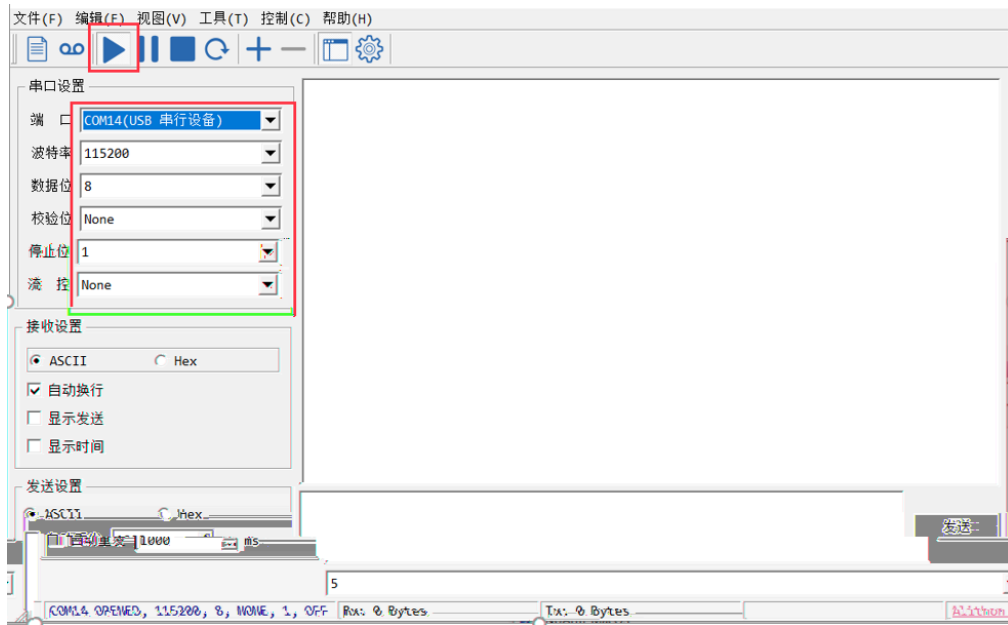


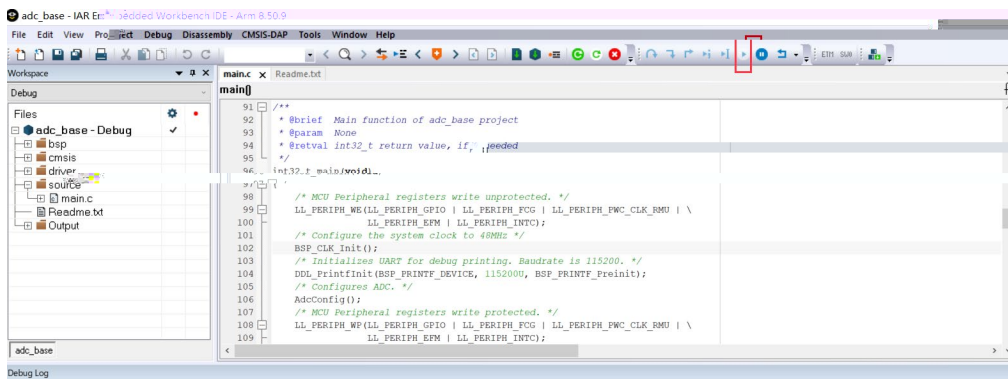
图 实物连接图

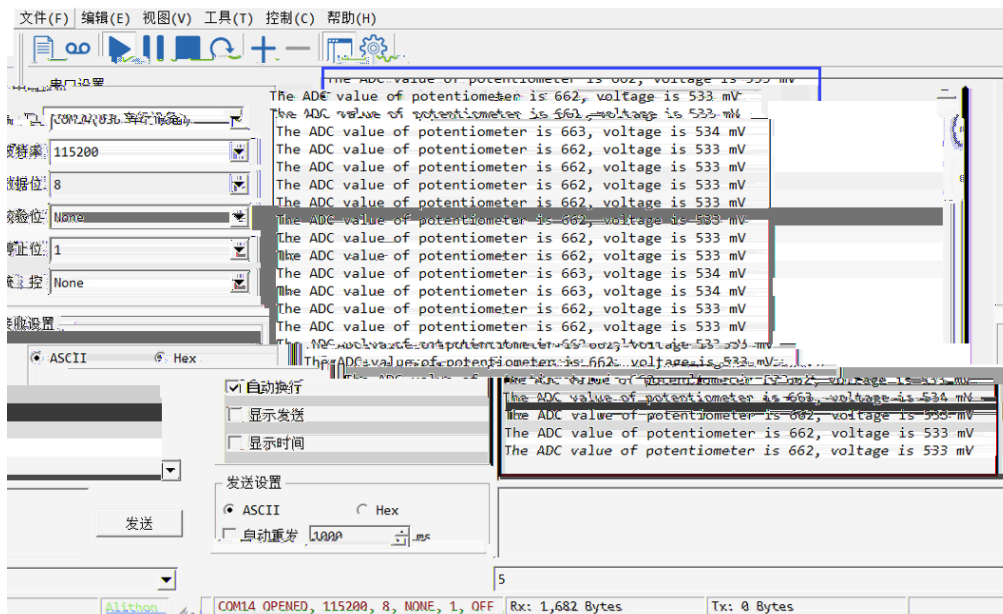
1.



2.

IDE





在线编程

XH-LINK

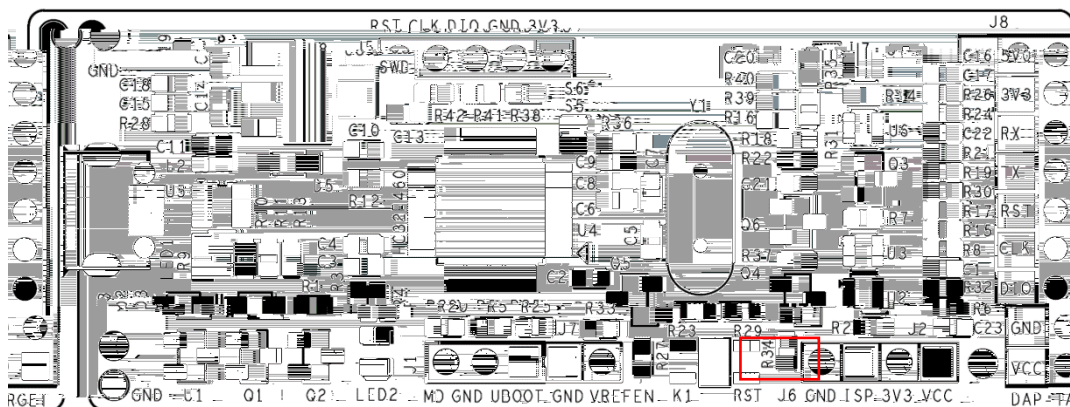
USB

CM ISP

HC32F120

HC32M120

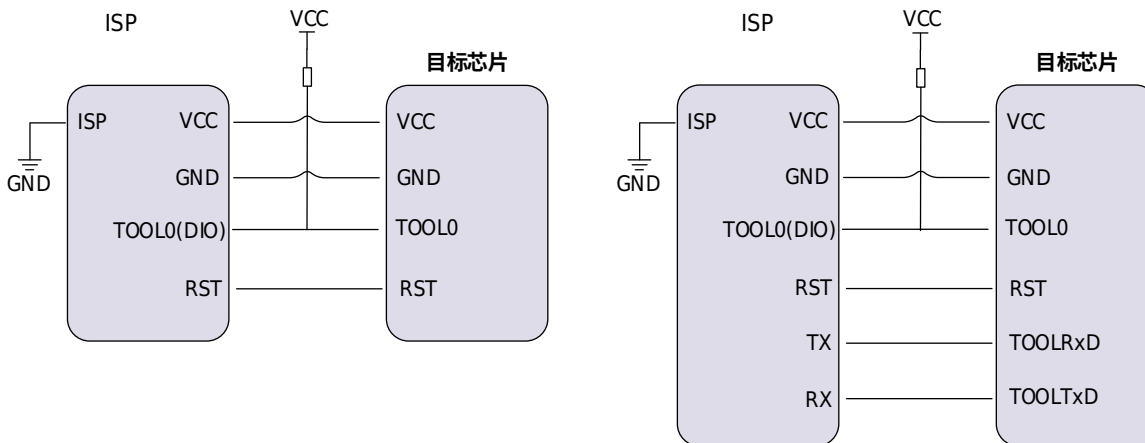
XH-LINK J6



HC32F120

MCU

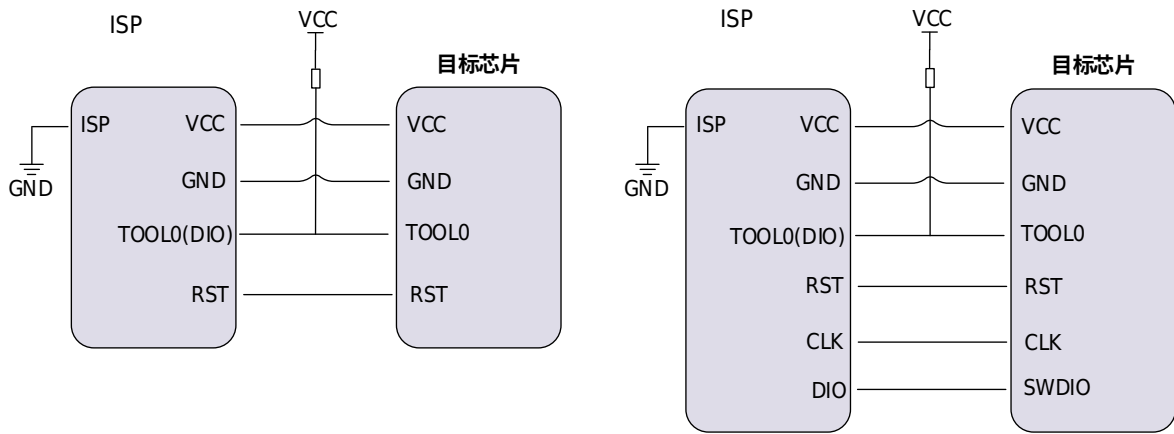
2-6



图

系列连接图

HC32M120 MCU 2-7



图

连接图

Cortex-M

调试器固件升级

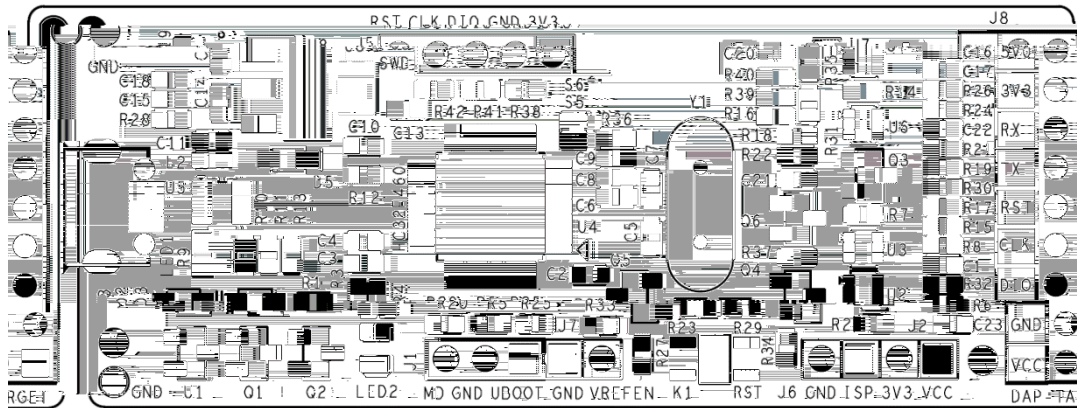
PC USB XH-LINK U

XH-LINK

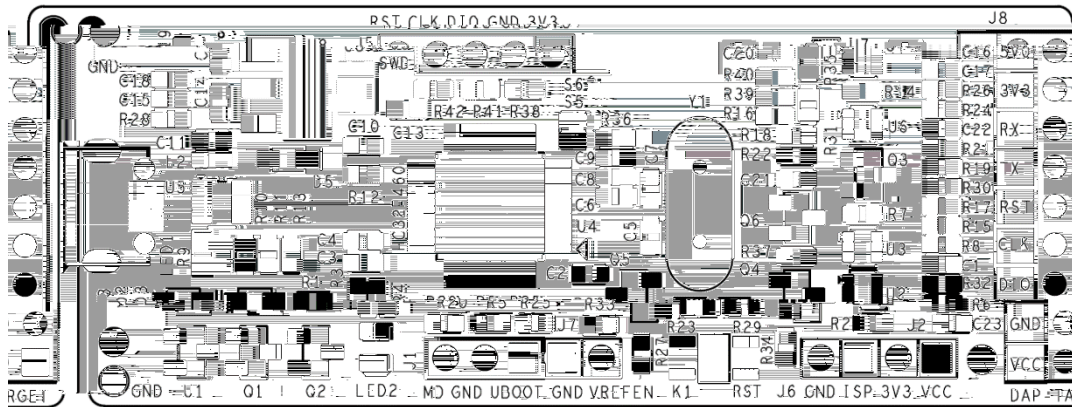
固件拖拽方式升级

USB

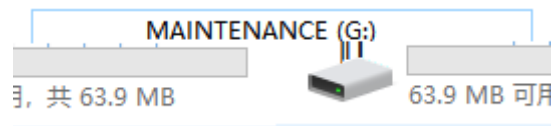
1. J1 GND UBOOT



2. XH-LINK USB PC LED2



3. PC U



4. J1 LED2

3. 2 USB XH-LINK PC

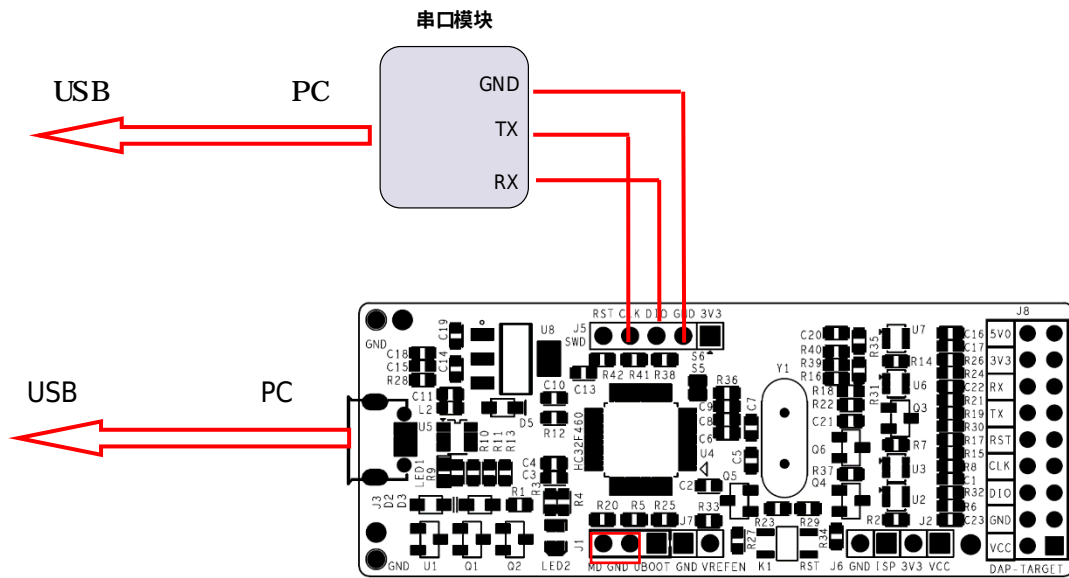


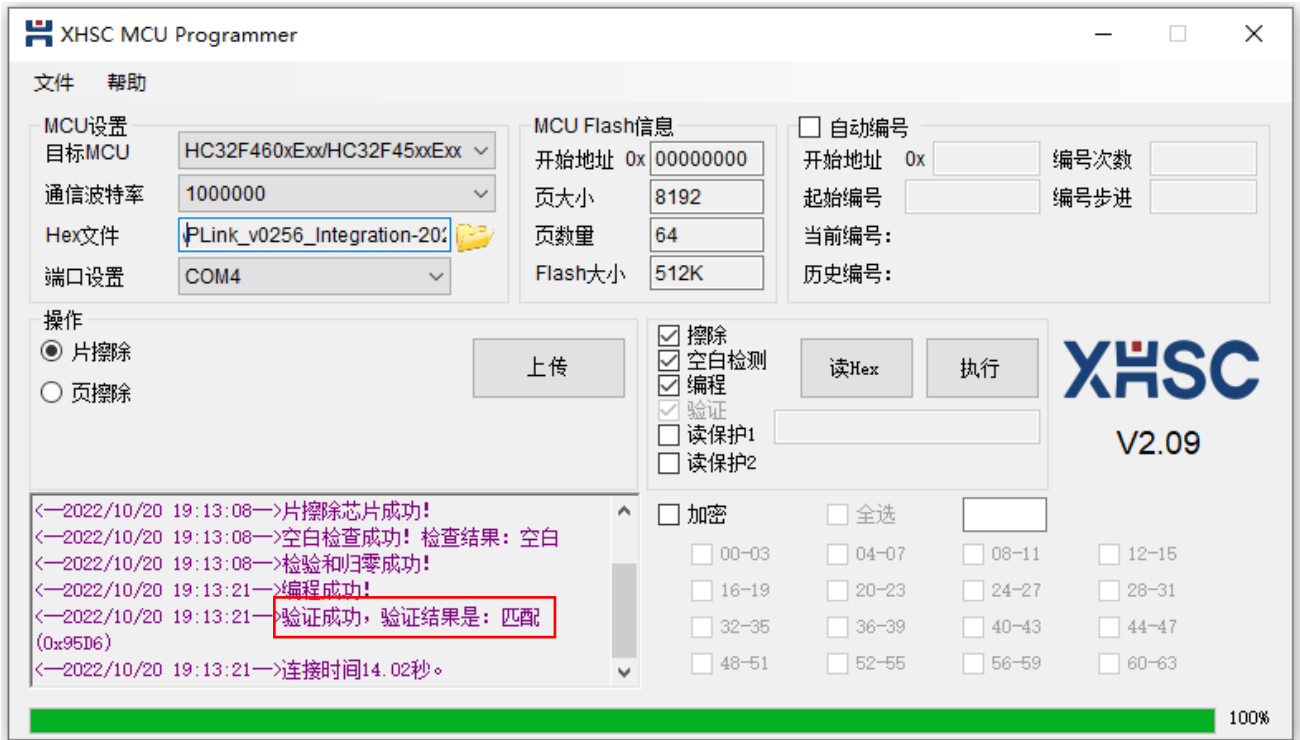
图 整体连接框图

烧写过程

hex DAPLink_v0256_Integration-20221014.hex

1. XH-LINK xhsc.exe
 - MCU - HC32F460xExx/ HC32F45xxExx
 - 1000000
 - Hex - DAPLink_v0256_Integration-20211014.hex
 - USB UART COM " hex"

3. “ ”



4. XH-LINK J1 WIN10“ ”
XH-LINK PC



版本修订记录

版本号	修订日期	修订内容
Rev1.0	2023/11/24	
Rev1.01	2024/01/24	XHLINK XLINK XH-LINK